



Conference

&

Banqueting

the ideal meeting place

Meetings and Conferences

Centrally located on the main motorway network the Sketchley Grange Hotel offers a variety of conference suites. Catering for up to 300 delegates theatre style in our main conference room, we also provide more intimate rooms for smaller meetings or interviews plus a range of breakout/syndicate rooms.

Free wireless internet

Banqueting Facilities

The Sketchley Grange excels in catering for private parties and banquets from 15 to 250 guests. We can provide a variety of menus for all your catering needs and take pride in our carefully selected wine lists from around the world. This combination aids to make the Sketchley Grange Hotel the ideal banqueting venue.

We are suitable for annual events, birthday parties, family gatherings and even themed evenings.

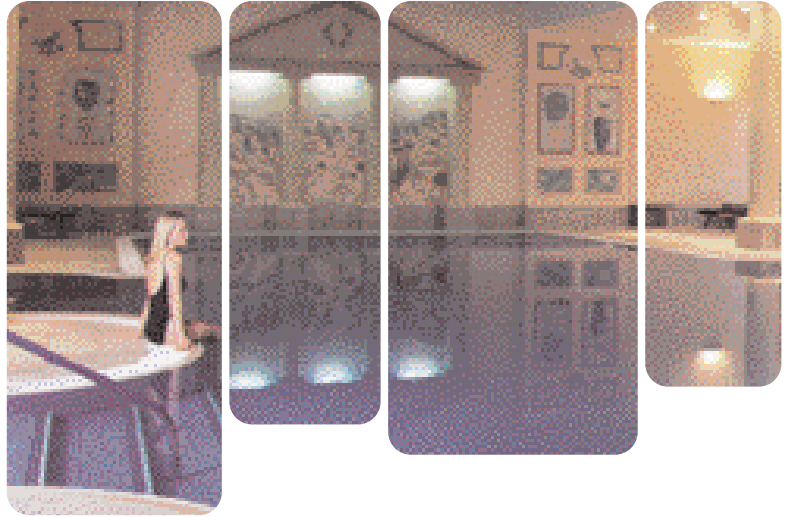
The Hotel is dedicated to the training and development of our staff producing the finest food and service for all our guests.





Romans Health and Leisure

As part of your 24 hour delegates package, is full use of our Romans Health and Leisure Club. With a 17 metre leisure pool, Jacuzzi, Steam Room and Sauna, they can relax and unwind after a hard day, alternatively if its stress relief you require, you can make use of our fully equipped gymnasium or get in touch with our beauty departments for a range of beauty treatments and pampering.



Accommodation

The Sketchley Grange Hotel in its unique Country House Hotel setting, offers a variety of room types to aid in your delegates stay. We have a total of 52 rooms with a combination of generous double and twin rooms and a variety of suites including executives, all rooms include en-suite bathrooms, tea and coffee making facilities as well as television, ironing facilities and the security peace of mind of a personal safe in your room. In addition to this all rooms have access to the hotels Free WiFi broadband connection.



Conference / Room Tariff

	Day		Evening	
	Conference	Exhibition	Conference	Exhibition
Bradgate Suite	£2,000	£2,500	£750	£1,000
Charnwood	£800	£1,000	£500	£600
Swithland	£700	£850	£400	£500
Bosworth	£400	£500	£300	£350
Warwick	£400	£500	£300	£350
Ansty	£150		£120	
Rutland	£120	£200	£120	£175
Meridian	£120		£120	
Kenilworth	£120		£120	
Stoneleigh	£120		£120	
Leamington	£120		£120	
Stratford	£120		£120	
Syndicate Rooms (Over any 8 hour period)	£175		£100	

Conference / Room Tariff

24 Hour Delegate Rate

inclusive of:

- Full use of Romans Health & Leisure Club
- 3 Course Table d'Hote Dinner
- Full English Breakfast
- Room Hire
- Morning Coffee and Biscuits
- 3 Course Hot and Cold Buffet Lunch
- Fresh Fruit Selection
- Afternoon Tea and Biscuits
- Iced Water and Mints
- Delegate Note Pad and Pencil
- Flipchart Paper and Pens
- Delegate Place Card
- Screen
- LCD Projector

Day Delegate Rate

inclusive of:

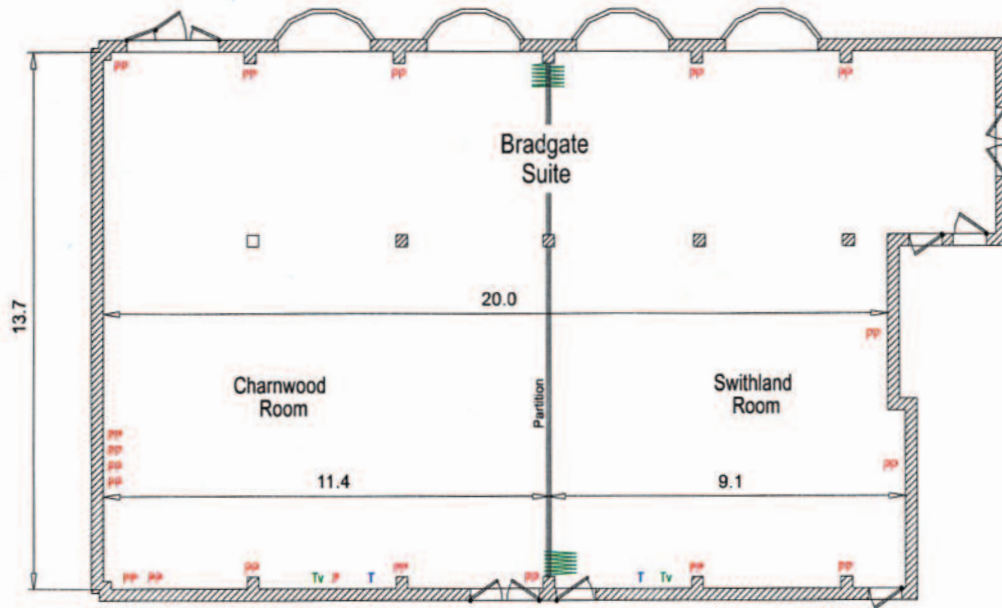
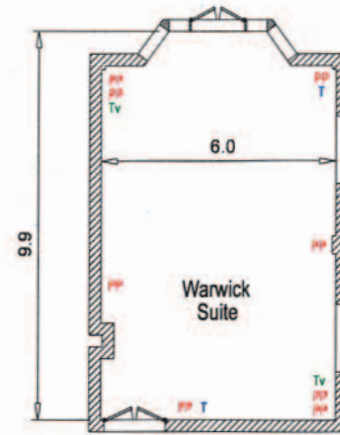
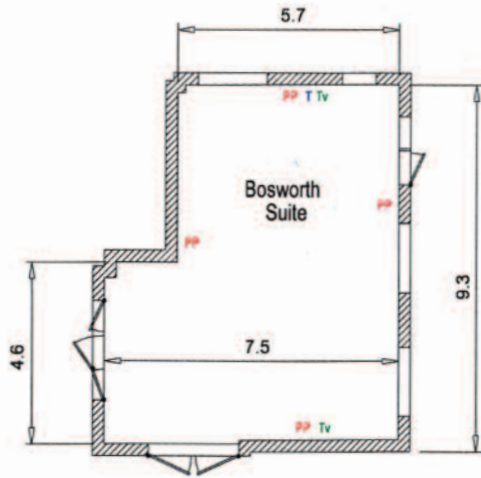
- Room Hire
- Morning Coffee and Biscuits
- 3 Course Hot and Cold Buffet Lunch
- Fresh Fruit Selection
- Afternoon Tea and Biscuits
- Iced Water and Mints
- Delegate Note Pad and Pencil
- Flipchart Paper and Pens
- Delegate Place Card
- Screen
- LCD Projector

24 Hour Weekend Conference

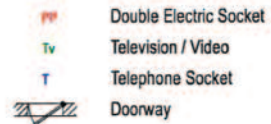
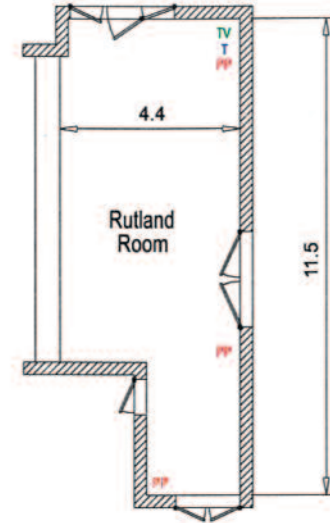
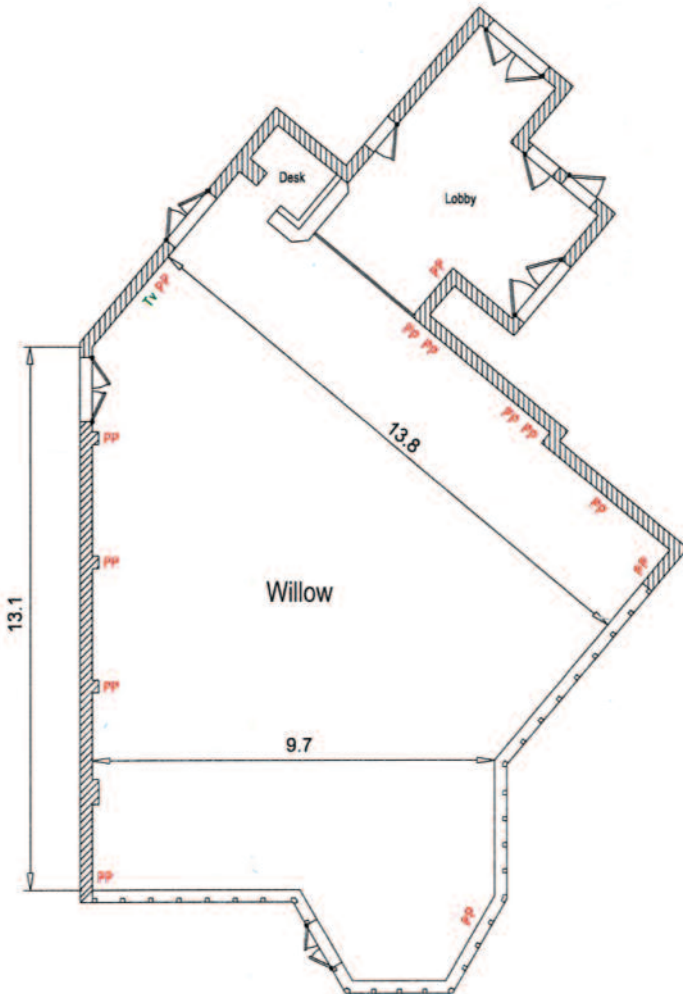
inclusive of:

- Full use of Romans Health & Leisure Club
- 3 Course Table d'Hote Dinner
- Full English Breakfast
- Room Hire
- Morning Coffee and Biscuits
- Bistro Buffet Lunch
- Afternoon Tea and Biscuits
- Iced Water and Mints
- Delegate Note Pad and Pencil
- Flipchart Paper and Pens
- Delegate Place Card
- Partners Stay Free with Continental Breakfast. Meals charged as taken.

Floor Plans



Floor Plans



Conference

Function Room	Length METERS	Width METERS	Height METERS	Theatre	Classroom	Boardroom	U-Shape	Banquet	Dinner Dance	Natural Daylight	Location
Bradgate Suite	20	14	3	300	150	-	-	270	25	3	Ground
Charnwood	11	14	3	120	70	30	40	100	80	3	Ground
Swithland	9	14	3	90	60	26	35	90	70	3	Ground
Bosworth	10.5	6.5	3.6	60	30	30	25	40	-	3	Ground
Warwick	9	6.2	3	60	30	30	25	40	-	3	Ground
Rutland	8.3	4.3	2.7	25	-	15	-	-	-	3	Ground
Ansty	6.7	5.3	3.6	15	-	8	-	-	-	3	Ground
Meridian	3.8	5.1	3	15	-	8	-	-	-	3	1st Floor
Stratford	6.2	4.3	3	15	-	10	-	-	-	3	1st Floor
Kenilworth	4.8	4.3	3	12	-	8	-	-	-	3	1st Floor
Stoneleigh	4.3	4.3	3	12	-	8	-	-	-	3	1st Floor
Leamington	4.1	4.3	3	12	-	8	-	-	-	3	1st Floor

Audio Visual Equipment Hire & Room Layouts

AV Equipment

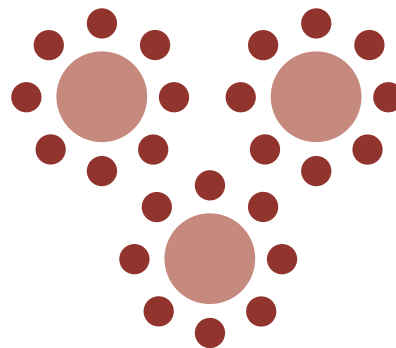
All prices available on request and quotations can be arranged for any items not listed.

- DVD Player
- TV Monitor
- LCD Projector
- Screen
- Table Stand
- PA System with Speakers
- Floor Stand
- Lectern
- Full Lectern with Light
- Flip Chart, Paper & Pens
- Video Conferencing
- ISDN Line

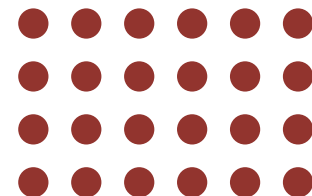
-
- WiFi Internet Access
Free of charge throughout the hotel

Business Centre Services

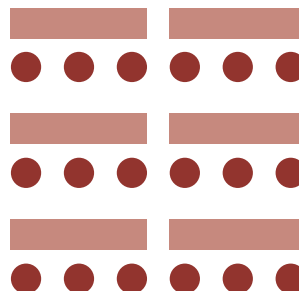
- Colour Photocopies A4 & A3
- Presentation Printouts
- Outgoing Facsimile
- Typing



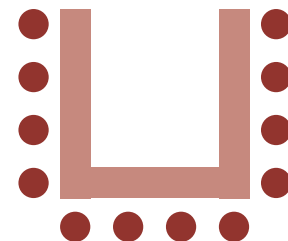
Cabaret



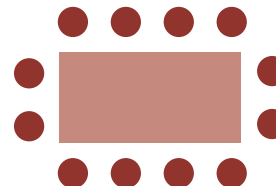
Theatre



Classroom



U-Shape



Boardroom

Menus

Buffet Selector

£11.70 per person for 6 items,

Additional Items at £2.25 per person

Selection of Sandwiches:

Mature Cheddar & Pickle,

Tuna Mayonnaise with Spring Onion

Honey Glazed Ham

with Dried Fruit Chutney

Selection of Mini Quiches

Mini Sausage Rolls

Spicy Chicken Wings

Assorted Pizza

Chicken Satay Batons

Olives Crisps & Nuts

Spring Rolls & Assorted Dim Sum

with Oriental Dips

Corn Chips with Guacamole & Salsa

Spiced Potato Skins with Sour Cream

Gourmet Buffet Dishes

Additional Items at £3.25 per person

Roast Sirloin of Beef Sandwiches,

Smoked Salmon,

Cream Cheese & Chive

Duck Spring Rolls

Prawn & Sesame Toast

Coated Calamari Strips

Deep Fried Butterfly Prawns

BBQ Chicken Legs

Roast Vegetable

and Goats Cheese Quiche

Deep Fried Brie with Cranberry Dip

Salmon Goujons

Spicy Avocado Wraps

Selection of Desserts to Include:

Lemon Tart with Raspberry Coulis

Bitter Chocolate Torte

Red Fruit Cheesecake

Individual Chocolate Éclairs

BBQ Menu

£15.00 per person

Pork and Mustard Sausages with

Caramelised Onions

Seafood Kebabs

with Lime & Chilli

Tender Chicken Pieces

Homemade Beef

and Horseradish Burger

Chinese Style Spare Ribs

Vegetarian Burgers

Tomato Onion Salad

Coleslaw

Jacket Potatoes

Mixed Leaf Salad

Garlic Ciabatta Bread

* * * *

Sweet of the Day

Fork Buffet

£16.95 per person

Starter

Melon Cocktail, Vanilla Syrup

or Soup of the Day

(Please choose one of the above)

Selection of Cold Meats

Choice of - Honey Glazed Ham with dried
Fruit Chutney, Roast Turkey with Sage Mayo

Selection of Sea Food

Choice of - Prawns with Cocktail Sauce,
Smoked Seafood Platter

Selection of Quiches

and Savoury Pastries

Choice of 2 - Roast Vegetable Quiche,

Gala Pie, Mini Pork Pie, Mini Crolines,

Selection of Petit Crolines

(Please Choose 2 of the given Options)

Hot Meat Dish

(Only 1 Meat Dish will be Served)

OPTIONS:

Lasagne Verdi with Garlic Bread

Penne Pasta Carbonara

Chilli Con Carne with Tortilla Chips

Sweet & Sour Pork

Chicken Stir Fry with Ginger & Spring Onion

Chicken Tikka Masala

Poppadoms with Mango Chutney

Hot Vegetarian Dish

(Only 1 Vegetarian dish will be served)

OPTIONS:

Roast Vegetable & Provencal Lasagne

Stir Fry Vegetables with ginger
and garlic & Spring Onions with Noodles

Wild Mushroom Stroganoff

Vegetable Tikka Masala,

Poppadoms Mango Chutney

Jacket Potatoes, New Potatoes, Boiled Rice

(only one will be served)

Selection of Five Fresh Salads

Choice of - New Potato, Spring Onion &
Chives, Tomato, Basil & Olive, Mixed Leaves,

Caesar, Roast Vegetable Cous Cous & Basil,

Red Cabbage & Orange, Nicoise Salad,

Cucumber & Mint with Natural Yoghurt

(Please choose 5 of the given options)

Fruit Bowl

Sweet of the Day

Menus

Sample Conference Finger Buffet

£13.95 per person

Selection of Sandwiches

Vegetable Samosas

Sausage Rolls

Spicy Chicken Wings

Chicken Tandoori Skewers

Vegetable Spring Rolls

Salmon Goujons

Plated Crudités

Brie & Cranberry Tartlets

Breaded Plaice Goujons

Mini Savoury Eggs

Mini Pork Pies

Vegetable Quiches

Cheese & Vegetable Pizza

Spicy Cajun Wedges

Chicken & Roast Vegetable Kebabs

Pork Satay

Torpedo Prawns

Selection of Mini Sweets

Chefs choice of a selection of the above items on the day

Sample Hot & Cold Buffet

Soup of the Day with Bread Roll

Coleslaw

Beetroot Red Onion & Natural Yoghurt

Potato Onion Mixed Herb Mayonnaise

Grilled Vegetable Penne Pasta Pesto

Mixed Seasonal Leaf

Curried Rice & Sultana

Tomato Olive Basil, Feta Cheese

Cucumber Cous Cous & Mint

Hot Meat Dish of the Day

Hot Vegetarian Dish of the Day

Cold Quiche, Sliced Ham, Beef

Smoked Trout, Mackerel, Gala Pie

Dessert of the Day

Price per person for

1 course = £8.95

2 course = £12.45

3 Course = £15.95

Cheese & Biscuits £4.00 supplement per person

Chefs choice of a selection of the above items on the day

Menus

Banqueting Menus

Menu 1

Roasted Pepper & Tomato Soup, Basil Pesto
Pan Fried Breast of Chicken Button Mushroom,
Tarragon Sauce
Savoy Cabbage & Bacon,
Rosemary Roast Root Vegetables
Fondant Potato
Wild Berry Mousse, Seasonal Fruits, Wild Berry Coulis
Coffee & Mints
£21.50 per person

Menu 2

Pear & Goats Cheese Tart
Seasonal Leaf, Celery,
Grape & Chutney
Baked Fillet of Salmon with Herb Crust
Basil Veloute, Braised Leeks, Steamed Carrots,
Parsley Mash
Mango Pannacotta, Raspberry Sauce,
Chantilly Cream
Coffee & Mints
£21.50 per person

Menu 3

Root Vegetable &
Coriander Soup
Sautéed Loin of Pork, Sage & Onion Sherry Sauce
Parsnip & Swede Puree, Buttered Baton Carrots,
Roast Potatoes
Warm Apple & Sultana Crumble Tart with Custard
Coffee & Mints
£21.50 per person

Menu 4

Warm Fresh Salmon & Smoked Haddock Mousse,
Pea Puree, Chive Cream
Seared Breast of Guinea Fowl, Port Wine,
Redcurrant Sauce
Braised Red Cabbage, Roast Potatoes,
Vichy Carrots
Sticky Toffee Pudding, Caramel Sauce
Coffee & Mints
£22.95 per person

Menus

Banqueting Menus

Menu 5

Chicken Apricot & Fois Gras Terrine
Rocket Leaf, Melba Toast, Blackcurrant Balsamic

Roast Rump of English Lamb, Rosemary Red Onion
Madeira Sauce

Buttered Baby Snowpeas, Swede Mash,
Minted New Potatoes

Sugar Glazed Lemon Tart, Gin & Lime Ice Cream,
Blackcurrant Coulis

Coffee & Mints

£25.95 per person

Menu 6

Warm Chicken & Fois Gras Timbale, Apple Cream
Veloute,

Sugar Glazed Apples

Poached Fillet of Sea Bass,
Mussel Saffron & Dill Butter Sauce
Fresh Asparagus, Puree Carrots,
Buttered Baby New Potatoes

Lemon & Lime Cheesecake
with Raspberry Ice Cream & Orange Sauce

Coffee & Mints

£29.95 per person

Menu 7

Warm Scallop Mousseline, Braised Leeks
Chive White Wine Sauce Poached Quail Egg

Sautéed Fillet of Beef, Wild Mushroom Thyme Sauce,
Braised Shallots

Garlic French Beans, Honey Roast Carrots, Puree
Swede, Chateau Potatoes

Baileys Pannacotta, Toffee Ice Cream, Sultana
Compote

Coffee & Mints

£29.95 per person

Vegetarian Main Courses

Pan Fried Herb Polenata, Grilled Mediterranean
Vegetables, Red Pesto, Tagliatelle Verdi

Roast Spanish Tomato Wild Mushrooms
Herb Cous Cous, Mixed Bean, Basil Butter Sauce,
Asparagus Tips

Sesame Celeriac, Mille Feuille
Stir Fried Vegetables, Black Bean Sauce,
Coriander Noodles

Warm Puff Pastry Case, Assorted Wild Mushrooms,
Chive Cream Sauce, New Potatoes

Chick Pea Moussiline, Braised Leeks, Shitake
Mushrooms,
Broad Bean Veloute

(Charged at selected main course price)

WHERE TO FIND US

DIRECTIONS

FROM THE SOUTH

M1 north to Rugby leave at junction 18 joining A5 North.

At Roundabout intersection with M69, take fourth exit signposted B4109 to Hinckley at second roundabout, turn left then right down Sketchley Lane, the hotel is 400 yards on the left hand side.

FROM THE NORTH

M1 south to Leicester, leave at junction 21 to join the M69 take the 2nd exit off the M69 – Junction 1, take the fourth exit off the roundabout – signposted B4109 to Hinckley. At second roundabout turn left, then right down Sketchley Lane the hotel is 400 yards on the left hand side.

Approximate travel times

BY ROAD

Leicester	15 minutes
Coventry	15 minutes
Birmingham	30 minutes

BY RAIL

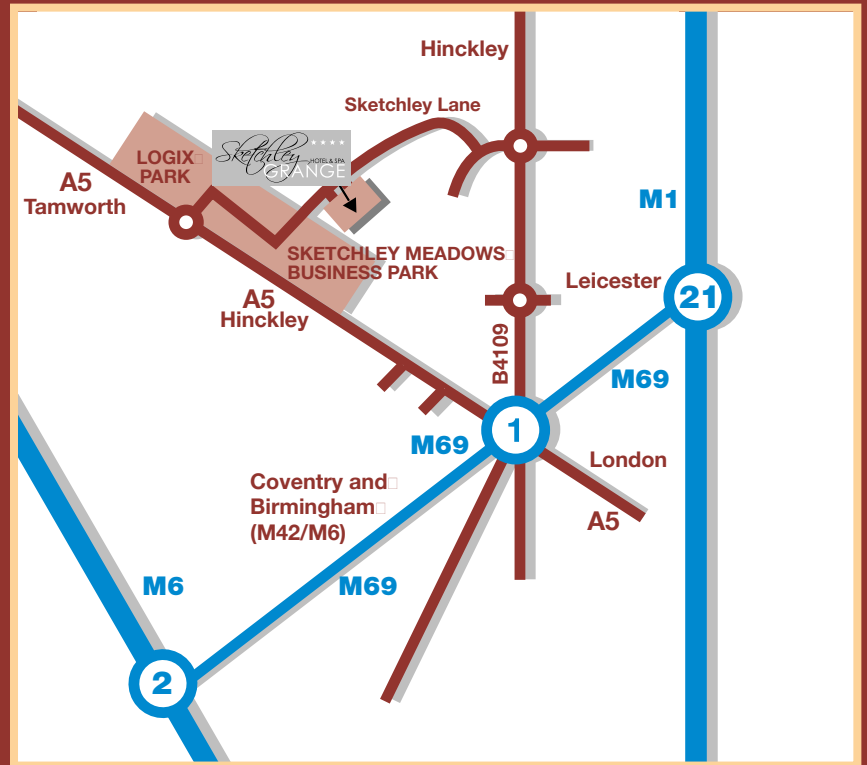
Rugby Station,	15 minutes from the hotel
London	52 minutes
Manchester	1 hour 58 minutes
Edinburgh	4 hours 45 minutes

BY AIR

Birmingham International Airport	30 minutes
East Midlands International Airport	30 minutes

BY HELICOPTER

Helipad location:	52° 31.472 North 001° 22.641 West
-------------------	--------------------------------------



Ample Free Parking



Sketchley Lane · Burbage · Hinckley · Leicestershire LE10 3HU
Tel: 01455 251133 Fax: 01455 631384
email: reservations@sketchleygrange.co.uk
www.sketchleygrange.co.uk

follow us on

